

**CROWN**

**Specifications**

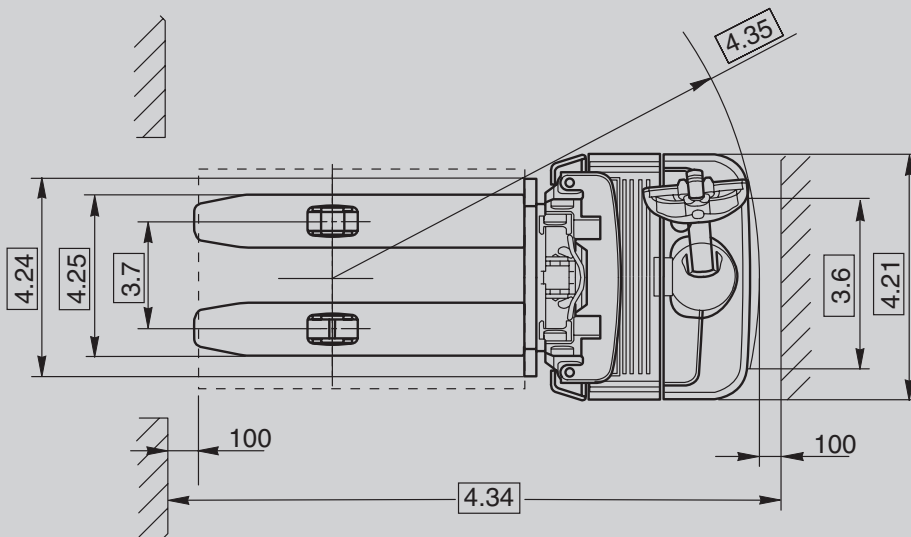
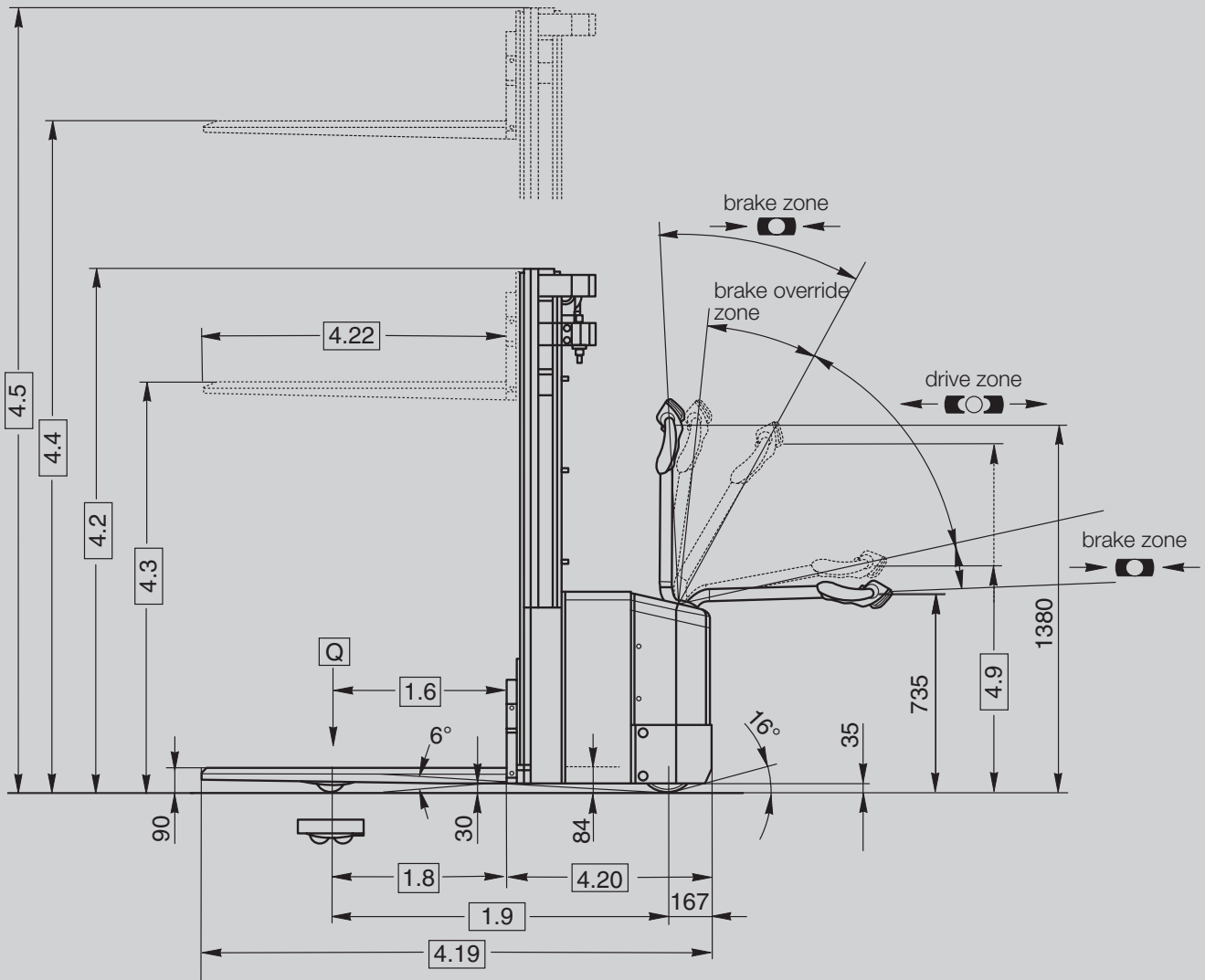
**WE/WS 2300 Series**

Pedestrian Powered  
Stacker

# WE/WS 2300

# Series



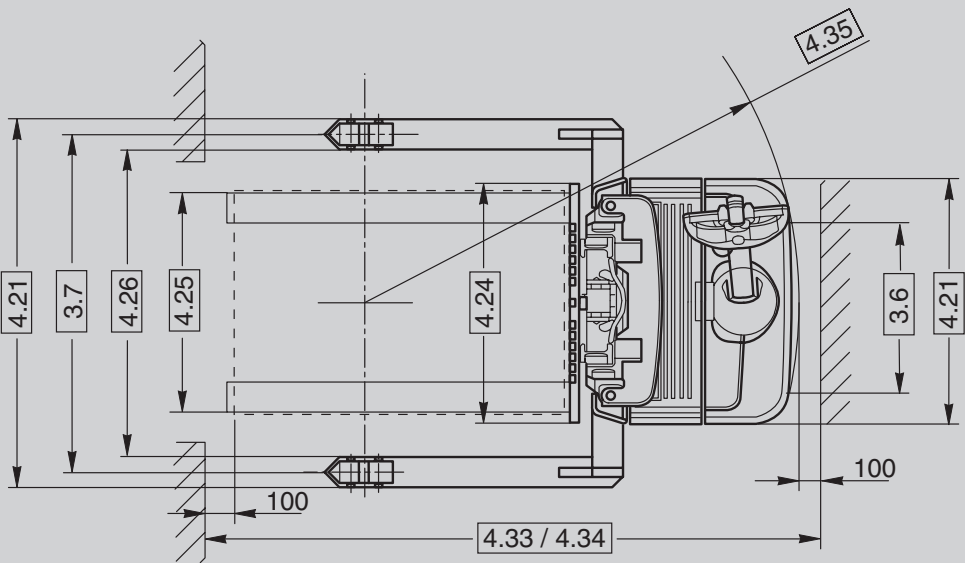
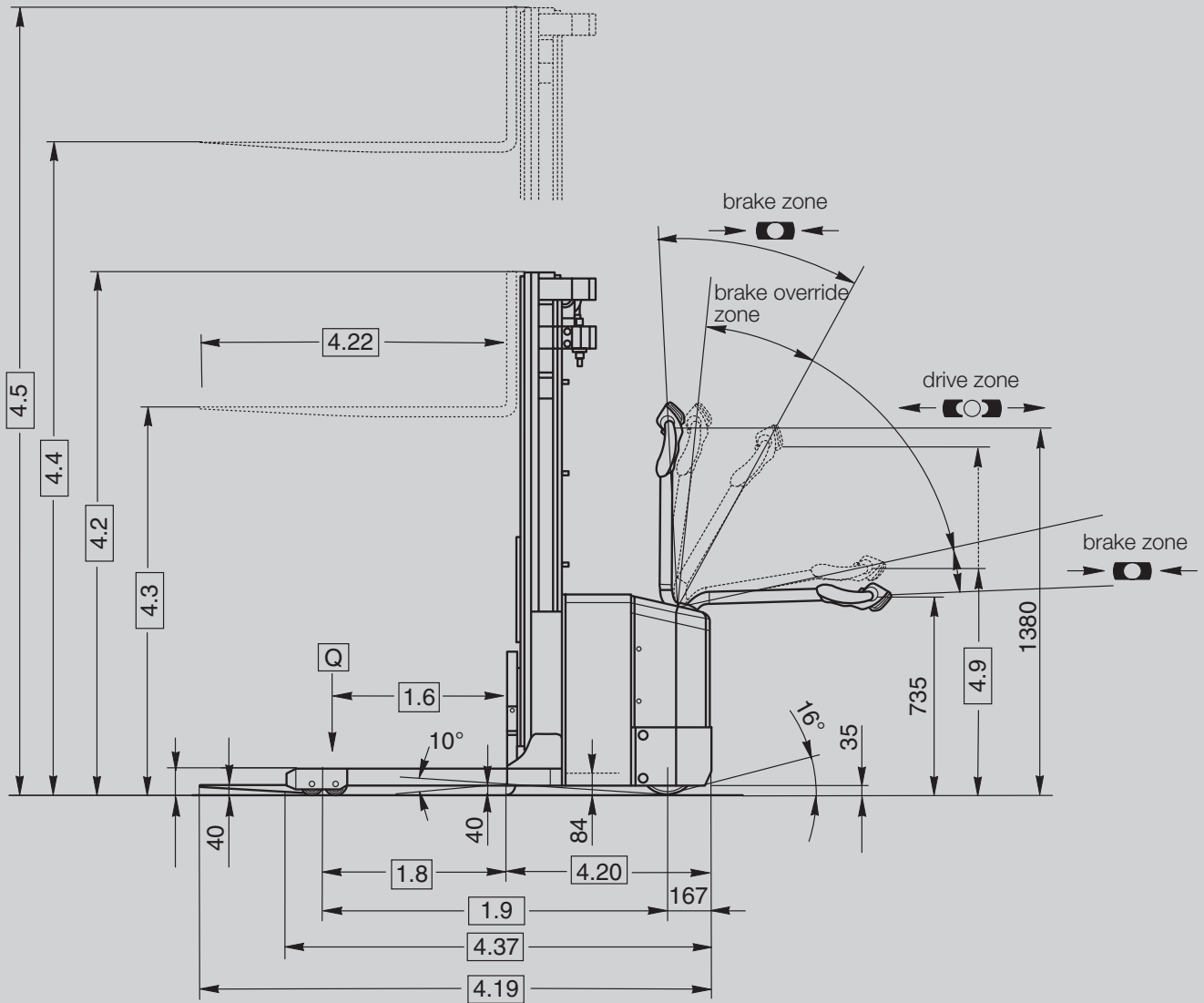


General Information	1.1	<b>Manufacturer</b>	Crown Equipment Corporation					
	1.2	<b>Model</b>				WE 2300-1.25	WE 2300-1.6	WE 2300-1.6
						TL/TF	TL/TF	TT
	1.3	<b>Power</b>				electric	electric	electric
	1.4	<b>Operator Type</b>				pedestrian	pedestrian	pedestrian
	1.5	<b>Load Capacity</b>		Q	t	1.25	1.6	1.6
	1.6	<b>Load Centre</b>		c	mm	600	600	600
	1.8	<b>Load Distance</b>		x	mm	643	694	694
	1.9	<b>Wheel Base</b>		y	mm	1206	1305	1305
Weight	2.1	<b>Weight</b>	less battery		kg	see table 1	see table 1	see table 1
	2.2	<b>Axle Load</b>	with load front/rear		kg	840 / 1550	890 / 1925	890 / 1925
	2.3	<b>Axle Load</b>	w.o. load front/rear		kg	825 / 315	870 / 340	870 / 340
Tyres	3.1	<b>Tyre Type</b>				vulkollan	vulkollan	vulkollan
	3.2	<b>Wheel Size</b>	front		mm	Ø 250 x 75	Ø 250 x 75	Ø 250 x 75
	3.3	<b>Wheel Size</b>	rear		mm	Ø 82 x 100	Ø 82 x 60	Ø 82 x 60
	3.4	<b>Additional Wheels</b>	castor wheel		mm	Ø 150 x 50	Ø 150 x 50	Ø 150 x 50
	3.5	<b>Wheels</b>	no. (x=driven) front/rear			1x + 1/2	1x + 1/4	1x + 1/4
	3.6	<b>Track Width</b>	front	b10	mm	587	587	587
	3.7	<b>Track Width</b>	rear	b11	mm	382 / 497	382 / 497	382 / 497
Dimensions	4.2	<b>Mast</b>	collapsed height	h1	mm	see table 1	see table 1	see table 1
	4.3	<b>Free Lift*</b>		h2	mm	see table 1	see table 1	see table 1
	4.4	<b>Lift Height</b>		h3	mm	see table 1	see table 1	see table 1
	4.5	<b>Mast*</b>	extended height	h4	mm	see table 1	see table 1	see table 1
	4.9	<b>Tiller Arm Height</b>	in drive position min./max.	h14	mm	780 / 1220	780 / 1220	780 / 1220
	4.15	<b>Lowered Fork Height</b>		h13	mm	90	90	90
	4.19	<b>Overall Length</b>		l1	mm	1880	1903	1928
	4.20	<b>Headlength</b>		l2	mm	730	753	778
	4.21	<b>Overall Width</b>		b1	mm	850	850	850
	4.22	<b>Fork Dimensions</b>		thxwxl	mm	50 x 190 x 1150	50 x 190 x 1150	50 x 190 x 1150
	4.24	<b>Fork Carriage Width</b>		b3	mm	680	680	680
	4.25	<b>Width Across Forks</b>		b5	mm	570 / 685	570 / 685	570 / 685
	4.31	<b>Ground Clearance</b>	with load below mast	m1	mm	35	35	35
	4.32	<b>Ground Clearance</b>	centre wheelbase	m2	mm	30	30	30
	4.34	<b>Working Aisle Width</b>	800 x 1200 length	Ast	mm	2286	2345	2345
4.35	<b>Turning Radius</b>		Wa	mm	1400	1500	1500	
Performance	5.1	<b>Travel Speed</b>	w./w.o. load		km/h	5.3 / 6.0	5.3 / 6.0	5.3 / 6.0
	5.2	<b>Lift Speed</b>	w./w.o. load		m/s	0.14 / 0.23	0.14 / 0.22	0.14 / 0.22
	5.3	<b>Lowering Speed</b>	w./w.o. load		m/s	0.36 / 0.22	0.36 / 0.22	0.36 / 0.20
	5.7	<b>Gradeability</b>	w./w.o. load, 30 min. rating		%	3 / 9	3 / 8	3 / 8
	5.8	<b>Max. Gradeability</b>	w./w.o. load, 5 min. rating		%	9 / 17	8 / 17	8 / 17
	5.10	<b>Service Brake</b>				electric	electric	electric
Motors	6.1	<b>Traction Motor</b>	60 min. rating		kW	1.1	1.1	1.1
	6.2	<b>Lift Motor</b>	15% on time		kW	2.2	3.0	3.0
	6.3	<b>Max. Battery Box Size</b>	DIN 43535 / A	lxwxh	mm	216 x 827 x 627	216 x 827 x 627	216 x 827 x 627
	6.4	<b>Battery Voltage</b>	nominal capacity 5h rating		V/Ah	24 / 360	24 / 360	24 / 360
	6.5	<b>Battery Weight</b>			kg	308	308	308
M	8.1	<b>Type of Controller</b>	drive			transistor	transistor	transistor

\* Subtract 810 mm from free lift; add 810 mm to extended height if load backrest is required.

**Table 1**

		WE2300-1.25 TL/TF						WE2300-1.6 TL/TF						WE2300-1.6 TT				
2.1	<b>Weight</b>	kg	850	865	885	900	925	920	940	965	985	1015	1005	1035	1060	1095	1115	
4.2	<b>Mast Collapsed</b>	mm	1980	2130	2280	2430	2630	1980	2130	2280	2430	2630	1725	1860	1980	2130	2235	
4.3	<b>Free Lift TL</b>	mm	150	150	150	150	150	150	150	150	150	150	-	-	-	-	-	
4.3	<b>Free Lift* TF/TT</b>	mm	1570	1720	1870	2020	2220	1570	1720	1870	2020	2220	1315	1450	1570	1720	1825	
4.4	<b>Lift Height</b>	mm	<b>3000</b>	<b>3300</b>	<b>3600</b>	<b>3900</b>	<b>4300</b>	<b>3000</b>	<b>3300</b>	<b>3600</b>	<b>3900</b>	<b>4300</b>	<b>3700</b>	<b>4100</b>	<b>4465</b>	<b>4915</b>	<b>5230</b>	
4.5	<b>Mast Extended*</b>	mm	3430	3730	4030	4330	4730	3430	3730	4030	4330	4730	4130	4530	4895	5345	5660	



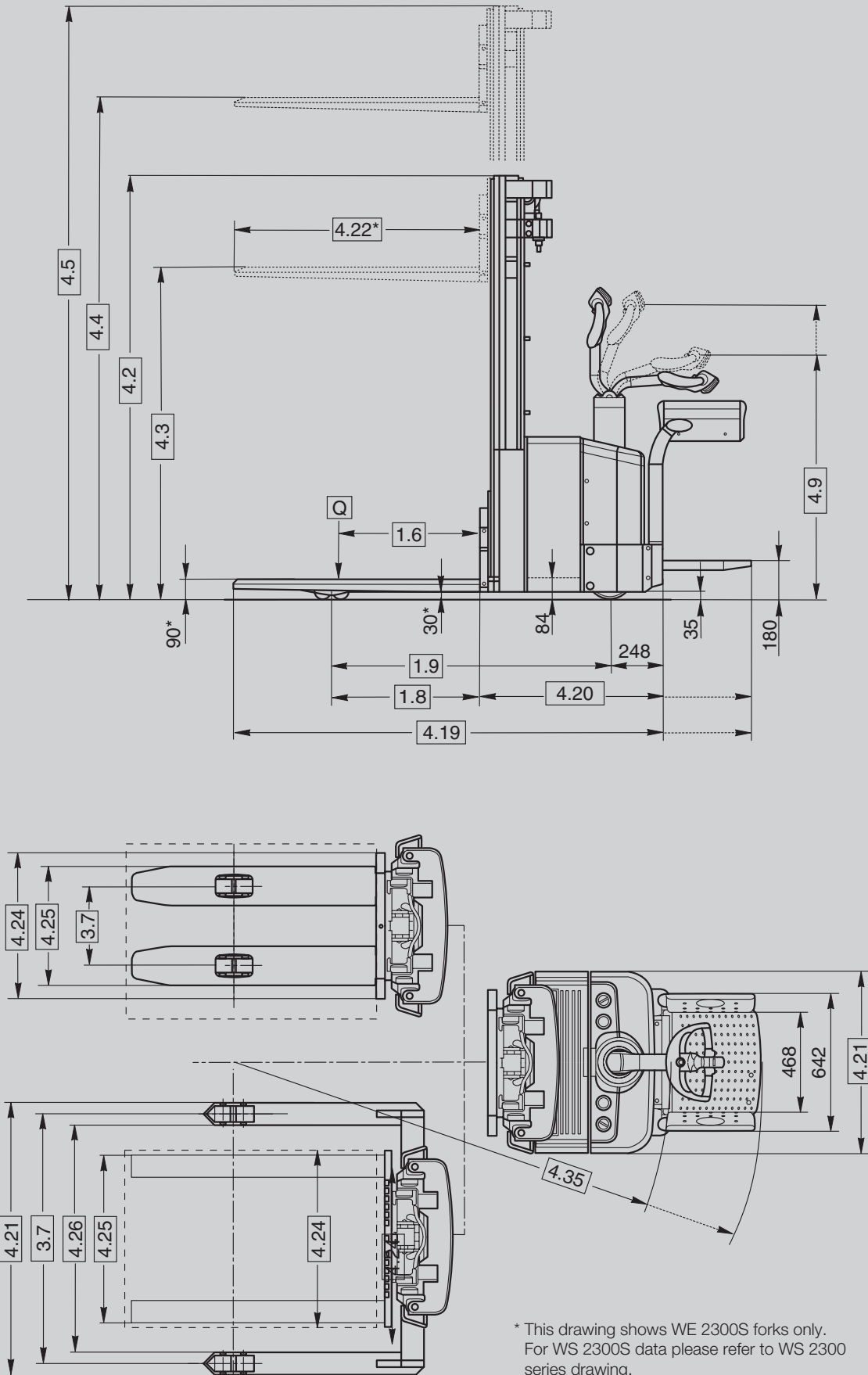
General Information	1.1	<b>Manufacturer</b>	Crown Equipment Corporation				
	1.2	<b>Model</b>				WS 2300-1.8	WS 2300-1.8
						TL/TF	TT
	1.3	<b>Power</b>				electric	electric
	1.4	<b>Operator Type</b>				pedestrian	pedestrian
	1.5	<b>Load Capacity</b>		Q	t	1.8	1.8
	1.6	<b>Load Centre</b>		c	mm	600	600
	1.8	<b>Load Distance</b>		x	mm	685	660
	1.9	<b>Wheel Base</b>		y	mm	1300	1300
Weight	2.1	<b>Weight</b>	less battery		kg	see table 2	see table 2
	2.2	<b>Axle Load</b>	with load front/rear		kg	910 / 2100	910 / 2100
	2.3	<b>Axle Load</b>	w.o. load front/rear		kg	870 / 340	870 / 340
Tyres	3.1	<b>Tyre Type</b>				vulkollan	vulkollan
	3.2	<b>Wheel Size</b>	front		mm	Ø 250 x 75	Ø 250 x 75
	3.3	<b>Wheel Size</b>	rear		mm	Ø 85 x 74	Ø 85 x 74
	3.4	<b>Additional Wheels</b>	castor wheel		mm	Ø 150 x 50	Ø 150 x 50
	3.5	<b>Wheels</b>	no. (x=driven) front/rear			1x + 1/4	1x + 1/4
	3.6	<b>Track Width</b>	front	b10	mm	587	587
	3.7	<b>Track Width</b>	rear	b11	mm	965, 1167, 1370	965, 1167, 1370
Dimensions	4.2	<b>Mast</b>	collapsed height	h1	mm	see table 2	see table 2
	4.3	<b>Free Lift**</b>		h2	mm	see table 2	see table 2
	4.4	<b>Lift Height</b>		h3	mm	see table 2	see table 2
	4.5	<b>Mast**</b>	extended height	h4	mm	see table 2	see table 2
	4.9	<b>Tiller Arm Height</b>	in drive position min./max.	h14	mm	780 / 1220	780 / 1220
	4.10	<b>Outrigger Height</b>		h8	mm	100	100
	4.15	<b>Lowered Fork Height</b>		h13	mm	40	40
	4.19	<b>Overall Length</b>		l1	mm	1933	1958
	4.20	<b>Headlength</b>		l2	mm	783	808
	4.21	<b>Overall Width</b>	front/rear	b1/b2	mm	850 / 1060,1267,1470	850 / 1060,1267 1470
	4.22	<b>Fork Dimensions</b>		thxwxl	mm	45 x 100 x 1145	45 x 100 x 1145
	4.23	<b>Fork Carriage</b>	ISO class			2A	2A
	4.24	<b>Fork Carriage Width</b>		b3	mm	825	825
	4.25	<b>Width Across Forks</b>		b5	mm	253-790	253-790
	4.26	<b>Inside Straddle Width</b>		b4	mm	865, 1067, 1270	865, 1067, 1270
4.31	<b>Ground Clearance</b>	with load below mast	m1	mm	35	35	
4.32	<b>Ground Clearance</b>	centre wheelbase	m2	mm	40	40	
4.33	<b>Working Aisle Width</b>	1000 x 1200 traverse	Ast	mm	2370	2380	
4.34	<b>Working Aisle Width</b>	800 x 1200 length	Ast	mm	2350	2360	
4.35	<b>Turning Radius</b>		Wa	mm	1490	1490	
4.37	<b>Length over Outrigger</b>		l7	mm	1535	1535	
Performance	5.1	<b>Travel Speed</b>	w./w.o. load		km/h	5.3 / 6.0	5.3 / 6.0
	5.2	<b>Lift Speed</b>	w./w.o. load		m/s	0.13 / 0.22	0.13 / 0.22
	5.3	<b>Lowering Speed</b>	w./w.o. load		m/s	0.36 / 0.20	0.36 / 0.20
	5.7	<b>Gradeability</b>	w./w.o. load, 30 min. rating		%	2 / 8	2 / 8
	5.8	<b>Max. Gradeability</b>	w./w.o. load, 5 min. rating		%	7 / 17	7 / 17
5.10	<b>Service Brake</b>				electric	electric	
Motors	6.1	<b>Traction Motor</b>	60 min rating		kW	1.1	1.1
	6.2	<b>Lift Motor</b>	15% on time		kW	3.0	3.0
	6.3	<b>Max. Battery-Box Size</b>	DIN 43535 / A	lxwxh	mm	216 x 827 x 627	216 x 827 x 627
	6.4	<b>Battery Voltage</b>	nominal capacity 5h rating		V/Ah	24 / 360	24 / 360
	6.5	<b>Battery Weight</b>			kg	308	308
M	8.1	<b>Type of Controller</b>	drive			transistor	transistor

\* Lift height 4250 mm is not available as TF-Mast.

\*\* Subtract 1.8 TF/TT 665 mm from free lift; add 1.8 TL/TF/TT 665 mm to extended height if load backrest is required.

Table 2

		WS 2300-1.8 TL/TF					WS 2300-1.8 1.4 TT					
2.1	<b>Weight</b>	kg	920	940	965	985	1015	1005	1035	1060	1095	1115
4.2	<b>Mast Collapsed</b>	mm	1980	2130	2280	2430	2630	1725	1860	1980	2130	2235
4.3	<b>Free Lift TL</b>	mm	100	100	100	100	100	-	-	-	-	-
4.3	<b>Free Lift** TF/TT</b>	mm	1425	1575	1725	1875	-	1170	1305	1425	1575	1680
4.4	<b>Lift Height</b>	mm	<b>2950</b>	<b>3250</b>	<b>3550</b>	<b>3850</b>	<b>4250*</b>	<b>3650</b>	<b>4050</b>	<b>4415</b>	<b>4865</b>	<b>5180</b>
4.5	<b>Mast Extended**</b>	mm	3525	3825	4125	4425	4825	4225	4625	4990	5440	5755



\* This drawing shows WE 2300S forks only.  
For WS 2300S data please refer to WS 2300 series drawing.

**WE/WS 2300S Series Specifications**

General Information	1.1	<b>Manufacturer</b>	Crown Equipment Corporation									
	1.2	<b>Model</b>					WE 2300S-1.25	WE 2300S-1.4	WS 2300S-1.4			
							TL / TF	TL / TF / TT	TL / TF / TT			
	1.3	<b>Power</b>					electric	electric	electric			
	1.4	<b>Operator Type</b>					pedestrian/rider	pedestrian/rider	pedestrian/rider			
	1.5	<b>Load Capacity</b>		Q	t		1.25	1.4	1.4			
	1.6	<b>Load Centre</b>		c	mm		600	600	600			
	1.8	<b>Load Distance</b>		x	mm		643	694	685**			
	1.9	<b>Wheel Base</b>		y	mm		1206	1280*	1300			
Weight	2.1	<b>Weight</b>	less battery		kg		see table 3	see table 3	see table 3			
	2.2	<b>Axle Load</b>	with load front/rear		kg		840 / 1550	890 / 1925	910 / 2100			
	2.3	<b>Axle Load</b>	w.o. load front/rear		kg		825 / 315	870 / 340	870 / 340			
Tyres	3.1	<b>Tyre Type</b>					vulkollan	vulkollan	vulkollan			
	3.2	<b>Wheel Size</b>	front		mm		Ø 250 x 75	Ø 250 x 75	Ø 250 x 75			
	3.3	<b>Wheel Size</b>	rear		mm		Ø 82 x 100	Ø 82 x 60	Ø 85 x 74			
	3.4	<b>Additional Wheels</b>	castor wheel		mm		Ø 150 x 50	Ø 150 x 50	Ø 150 x 50			
	3.5	<b>Wheels</b>	no. (x=driven) front/rear				1x + 2/2	1x + 2/4	1x + 2/4			
	3.6	<b>Track Width</b>	front	b10	mm		587	587	587			
	3.7	<b>Track Width</b>	rear	b11	mm		382	382	965/1167/1370			
Dimensions	4.2	<b>Mast</b>	collapsed height	h1	mm		see table 3	see table 3	see table 3			
	4.3	<b>Free Lift***</b>		h2	mm		see table 3	see table 3	see table 3			
	4.4	<b>Lift Height</b>		h3	mm		see table 3	see table 3	see table 3			
	4.5	<b>Mast***</b>	extended height	h4	mm		see table 3	see table 3	see table 3			
	4.9	<b>Tiller Arm Height ****</b>	in drive position min./max.	h14	mm		1040 / 1420	1040 / 1420	1040 / 1420			
	4.15	<b>Lowered Fork Height</b>		h13	mm		90	90	40			
	4.19	<b>Overall Length</b>	platform up / down	l1	mm		1963 / 2432	1986 / 2455*	2016 / 2485*			
	4.20	<b>Headlength</b>	platform up / down	l2	mm		813 / 1282	836 / 1305*	866 / 1335*			
	4.21	<b>Overall Width</b>		b1/b1	mm		850 / -	850 / -	850/1060,1267,1470			
	4.22	<b>Fork Dimensions</b>		thxwxl	mm		50 x 190 x 1150	50 x 190 x 1150	45 x 100 x 1145			
	4.23	<b>Fork Carriage</b>	ISO class						2 A			
	4.24	<b>Fork Carriage Width</b>		b3	mm		680	680	825			
	4.25	<b>Width Across Forks</b>		b5	mm		570	570	253-790			
	4.26	<b>Inside Straddle Width</b>		b4	mm		-	-	865/1067/1270			
	4.31	<b>Ground Clearance</b>	with load below mast	m1	mm		35	35	35			
	4.32	<b>Ground Clearance</b>	centre wheelbase	m2	mm		30	30	40			
	4.33	<b>Working Aisle Width</b>	1000 x 1200 traverse	Ast	mm		-	-	2425 / 2870*			
4.34	<b>Working Aisle Width</b>	800 x 1200 length	Ast	mm		2365 / 2815	2400 / 2850*	2250 / 2695*				
4.35	<b>Turning Radius</b>	platform up / down	Wa	mm		1480 / 1926	1555 / 2001*	1570 / 2016*				
Performance	5.1	<b>Travel Speed</b>	w./w.o. load pedestrian		km/h		5.3 / 6.0	5.3 / 6.0	5.3 / 6.0			
			w./w.o. load rider		km/h		7.0 / 8.3	7.0 / 8.3	7.0 / 8.3			
	5.2	<b>Lift Speed</b>	w./w.o. load		m/s		0.16 / 0.26	0.14 / 0.22	0.13 / 0.22			
	5.3	<b>Lowering Speed</b>	w./w.o. load		m/s		0.36 / 0.22	0.36 / 0.22	0.36 / 0.20			
	5.7	<b>Gradeability</b>	w./w.o. load, 30 min. rating		%		3 / 9	3 / 8	3 / 8			
	5.8	<b>Max. Gradeability</b>	w./w.o. load, 5 min. rating		%		9 / 17	8 / 17	7 / 17			
5.10	<b>Service Brake</b>					electric	electric	electric				
Motors	6.1	<b>Traction Motor</b>	60 min. rating		kW		1.1	1.1	1.1			
	6.2	<b>Lift Motor</b>	15% on time		kW		2.2	3.0	3.0			
	6.3	<b>Max. Battery Box Size</b>	DIN 43535 / A	lxwxh	mm		216 x 827 x 627	216 x 827 x 627	216 x 827 x 627			
	6.4	<b>Battery Voltage</b>	nominal capacity 5h rating		V/Ah		24 / 360	24 / 360	24 / 360			
	6.5	<b>Battery Weight</b>			kg		308	308	308			
M	8.1	<b>Type of Controller</b>	drive				transistor	transistor	transistor			

\* TT-Mast + 25 mm      \*\*\* WE 2300S: Subtract 810 mm from free lift; add 810 mm to extended height if load backrest is required.      \*\*\*\* with optional 850 mm  
 \*\* TT-Mast - 25 mm      WS 2300S: Subtract 665 mm from free lift; add 665 mm to extended height if load backrest is required      high side restraints + 60 mm

Table 3

		WE 2300S-1.25 TL/TF					WE 2300S-1.4 TL/TF					WE 2300S-1.4 TT					WS 2300S-1.4 TL/TF					WS 2300S-1.4 TT					
2.1	<b>Weight</b>	kg	900	915	935	950	975	970	990	1015	1035	1065	1055	1085	1110	1145	1165	970	990	1015	1035	1065	1055	1085	1110	1145	1165
4.2	<b>Mast Collap.</b>	mm	1980	2130	2280	2430	2630	1980	2130	2280	2430	2630	1725	1860	1980	2130	2235	1980	2130	2280	2430	2630	1725	1860	1980	2130	2235
4.3	<b>Free Lift TL</b>	mm	150	150	150	150	150	150	150	150	150	150	-	-	-	-	-	100	100	100	100	100	-	-	-	-	-
4.3	<b>Free Lift TF/TT</b>	mm	1570	1720	1870	2020	2220	1570	1720	1870	2020	2220	1315	1450	1570	1720	1825	1425	1575	1725	1875	-	1170	1305	1425	1575	1680
4.4	<b>Lift Height</b>	mm	<b>3000</b>	<b>3300</b>	<b>3600</b>	<b>3900</b>	<b>4300</b>	<b>3000</b>	<b>3300</b>	<b>3600</b>	<b>3900</b>	<b>4300</b>	<b>3700</b>	<b>4100</b>	<b>4465</b>	<b>4915</b>	<b>5230</b>	<b>2950</b>	<b>3250</b>	<b>3550</b>	<b>3850</b>	<b>4250</b>	<b>3650</b>	<b>4050</b>	<b>4415</b>	<b>4865</b>	<b>5180</b>
4.5	<b>Mast Extended</b>	mm	3430	3730	4030	4330	4730	3430	3730	4030	4330	4730	4130	4530	4895	5345	5660	3525	3825	4125	4425	4825	4225	4625	4990	5440	5755

**Standard Equipment**

1. X10<sup>®</sup> control handle.
2. 24-Volt electrical system.
3. Four point suspension.
4. MOSFET transistorized traction control.
5. Electric brake.
6. Brake override.
7. Key switch.
8. Horn button in each handgrip.
9. Emergency power disconnect switch.
10. SBE 160 red battery connector.
11. Auto reverse safety switch.
12. Hour meter.
13. Vulkollan drive tyre, load wheels and castor wheel(s).
14. High visibility mast design.
15. Plexiglas mast guard.
16. DIN battery compartment.
17. Maintenance free self adjusting steering chain tensioner.
18. Load wheels and castor wheels with build in debris guard.
19. Two speed lower with soft start and stop.
20. Heavy duty dual castor wheels (WE 2300S and WS 2300S).
21. Suspended floorboard (WE 2300S and WS 2300S)
22. Cushioned side restraints (WE 2300S and WS 2300S).

**Optional Equipment**

1. Pivoting tandem load wheels Ø 82 x 60 mm (WE 2300-1.25 and WE 2300S-1.25).
2. Rubber drive tyre Ø 250 x 85 mm (WE 2300 and WS 2300).
3. Heavy-duty dual castor wheels Ø 125 x 60 mm (WE 2300 and WS 2300).
4. Maintenance free battery 192 Ah with integrated charger.
5. Industrial battery 230 Ah with integrated charger.
6. Integrated charger (only industrial batteries).
7. Battery watering system (only industrial batteries).
8. Battery compartment rollers.
9. Battery discharge indicator with hour meter and lift lockout.
10. Freezer conditioning -30° operating temperature (standard with metal mast grill).
11. Load backrest.
12. Flashing lights.
13. Travel alarm.
14. Metal mast grill.
15. Fork length options.
16. Outside fork spread 685 mm (WE 2300).
17. Additional mast hydraulics - single hydraulic function.
18. Sideshifter (WS 2300 and WS 2300S).
19. Folding platform options.

**Electrical System****24 volt electrical system:**

1. MOSFET controller, microprocessor controlled with on-board service diagnostics. This state of the art transistor controller provides many benefits such as maximum energy efficiency, reduced maintenance and infinite speed control capability.

**Performance and Diagnostic:**

Various detected faults can be recognized through an status flash code signalled by an LED. The status code will be stored in the controller memory. The integrated storage register for fault history can be interrogated by service personnel. With the hand held unit in test mode functional test of components is also possible. All changeable parameters can be programmed by the hand held unit.

2. Robust drive and lift motors provide high reliability and efficiency.
3. Electric panel with swing out feature, allows easy access and maintenance.
4. Emergency disconnect is easily accessible from all operating positions.
5. Proven componentry ensures high component reliability.
6. Control and power circuits are short circuit protected.
7. Reduced speed when forks elevated and inner mast is raised approx. 250 mm.
8. All wiring is colour coded.

**Hydraulic System**

Heavy-duty hydraulic motor with integral pump and reservoir for maximum efficiency and durability, selected for optimum lift performance and low operating noise. The hydraulic control module (HCM) provides quick, smooth initiation and stopping of lift function. Single-speed lift and two-speed lowering is standard. Cylinder rods are hard-chrome plated with polyurethane seals. Relief valve tuned to capacity protects all components in the hydraulic system.

Auxiliary hydraulics circuit suitable for side shift is optional on WS 2300 and WS 2300S.

**Drive Unit / Brake**

Heavy-duty gear box with helical spur input gear for low noise emission. Fixed, vertically mounted drive motor (does not rotate) ensures minimum wear on electrical cables as well as minimum contamination and optimum cooling. Drive unit is equipped with an electro-magnetic brake, spring applied, electrically released. The brake is directly mounted on the drive motor shaft and the braking effort is transmitted through the gear reduction. The brake is activated by the control handle position.

**Frame/Pivoting Carriage**

Modular pivoting carriage design ensures excellent traction, optimum truck stability and minimum steering effort under all conditions. Easy serviceability of all components in power unit and simple adjustment to compensate for tyre wear is possible. Single swing out door design allows easy access to all components. Contoured panels around power unit and mast give maximum protection to the operator and internal components.

**Mast**

High visibility two and three stage mast design features nested I-beams and angled rollers. Lift cylinders are positioned in outer I-beam profile for best visibility through mast and clear view onto fork tips during load handling. Standard equipment includes full free lift for two and three stage mast. Mast cushioning between stages ensures smooth operation. Heavy-duty mast carriage and chain rollers are sealed and lubricated for life

**Fork Carriage**

WE-model features fixed formed steel forks to accommodate Euro-pallet sizes. WS-model features a standard fork carriage ISO class 2A, width across forks adjustable from 253 mm to 790 mm. For WS, the fork length of 1150 mm is standard, optional fork lengths are available.

**Control Handle**

The WE/WS series robust X10<sup>®</sup> control handle is designed to allow for optimum turning radius with low steering effort.

All control buttons can be operated with either hand and can be accessed with minimum hand and wrist movement. The operator's hands are protected within the handle yoke. The horn switches are integrated in the hand grips. An ergonomic forward and reverse thumb wheel allows for precise manoeuvring. The parking brake is activated at the lower and upper end of the tiller position.

**WE/WS 2300 Brake Override Function**

For easy operation in tight areas a brake override function is incorporated which allows the WE/WS 2300 to be driven safely and precisely at creep speed with the handle in a near vertical position.

The control handle remains within the profile of the power unit at all times, even when performing 90° turn. When the forward/reverse thumb wheel is in neutral the parking brake is immediately activated thus preventing unexpected movement.

**Steering**

The centre mounted X10<sup>®</sup> handle allows for an optimum turning radius and enables the operator to drive and manoeuvre in very congested areas. Steering effort applied at the handle by the operator is transmitted to the drive unit via a double universal shaft and a maintenance free self adjusting steering chain.

**Battery**

Removable side panels and top hinged cover allow easy access to the battery, as well as battery change in three directions, either side or top lift out. Compartment rollers can be fitted as an option. A DIN battery 250 Amp. hours with integrated charger is available as an option. The battery compartment offers space for batteries up to 375 Amp. hours.

**Safety Regulations**

Conforms to European safety standards. Dimensions and performance data given may vary due to manufacturing tolerances. Performance is based on an average size vehicle and is affected by weight, condition of truck, how it is equipped and the conditions of the operating area. Crown products and specifications are subject to change without notice.

