

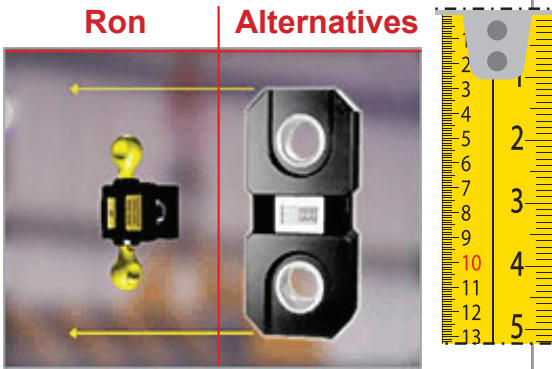


**Ron 4000 Load Cell with built-in Amplifier**

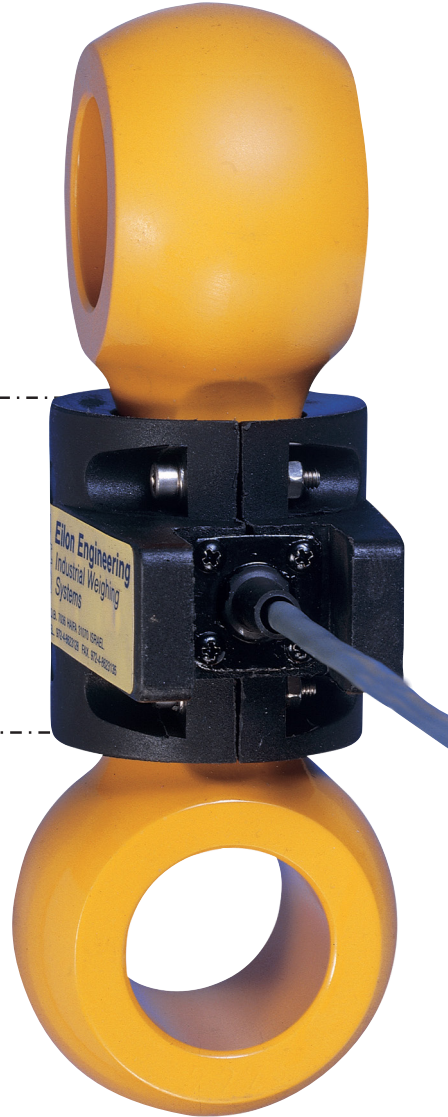
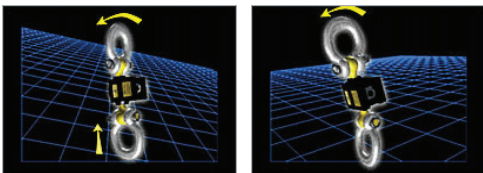
**Short delivery time:**  
 Usually 2 - 4 business days.

**High quality Aerospace Steel**  
 for increased strength and safety.

**Exceptionally small dimensions**  
 enable minimum headroom loss. For example: Height of the 12.5t load cell is 5.2 inch / 131 mm



**Unique design:** 90° between shackle holes eliminates external moments and consequently increases accuracy, safety and longevity.



**More than three decades in the market:** Eilon Engineering Ltd. has specialized in the development and manufacturing of Ron crane scales and dynamometers since 1976. We have thousands of repeat customers such as NASA, Boeing, US Air Force and many more.

**Wide temperature range:**  
 Load cell: -15°F to +175°F  
 (-25°C to + 80°C )

**Optional offshore and underwater load cell sealing levels:**  
 High sealing levels IP 67 and IP 68 for offshore and underwater applications.

**New: Fatigue rated load cells - an important and unique safety feature:** All Ron crane scales, load cells and dynamometers are now Fatigue Rated. They have an improved fatigue resistance level.



## Ron 4000 Load Cell with built-in Amplifier

### Description

The Ron 4000 load cell has an analog output but not having its own display, it is designed to be used with programmable logic controllers (PLCs).

For example, Ron 4000 electronic Load Cells serve for tension measurement and controlled tensioning of rubber belt conveyors, or continuous weighing of steam piping to detect water condensation in pipes and drain them when the max. permitted level is reached.

The unique perpendicular hole structure of the load cells neutralizes external moments and thus improves safety, utility, and accuracy.

The small and light load cells ensure low headroom loss for any application.

All Ron load cells and dynamometers are made of high quality aerospace steel for increased strength and safety.

Ron Crane Scales, Dynamometers, Hanging Scales and Load Cells have been in the market for more than 30 years and are used for weighing during lifting, overload prevention and tension force and load measurement.

All Ron Crane Scales, Dynamometers and Load Cells are factory-tested and supplied with a test certificate.



## Ron 4000 Load Cell with built-in Amplifier

### Specifications

**Safety Factor:** Designed to 5:1

**Proof Load:** Each system proof-loaded to 200% of capacity (certified) up to a test force of 400t.

**Load Cell Material:** High-strength, aerospace quality alloy steel, polyurethane coated.

**Linearity:** 0.1% f.s

**Input:** 6 to 12vdc

**Output:** 0 to 2v. Options: 4 to 20mA, 0 to 2v + 4 to 20mA

**Cable:** supplied with 9' (3m) cable.

**Temperature Range:** -15°f to +175°f (-25°c to +80°c).

**Environmental:** Weatherproof, NEMA 4, IP 65.

**Calibration:** Supplied with approximate calibration (final calibration is performed by the customer, after connecting the load cell to the measuring / control system).  
Zero load =  $0 \pm 0.01v$ ,  $4 \pm 0.2mA$ . Full load =  $2 \pm 0.1v$ ,  $20-1mA$ .

**Max. Input Current:** 100mA

**Wiring:**

Input voltage (6 to 12VDC) Red  
Common Black  
Output V White  
Output A Green  
Body without insulation



## Ron 4000 Load Cell with built-in Amplifier

### Options

- 4 to 20 mA
- 0 to 2v + 4 to 20 mA
- IP 68 Load cell with underwater capability.

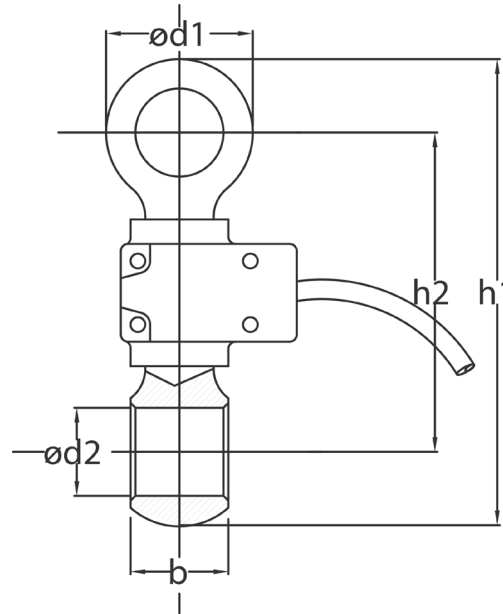


**Ron 4000 Load Cell with built-in Amplifier**

**Dimensions Table and Drawing**



**Optional carrying case**



| Cat no. | Cap.<br>tons | Resolution |     | Load cell weight |     | H1 (max.) |      | H2 (max.) |      | B (max.) |      | øD1 (max.) |      | øD2 (min.) |      | Matching anchor shackle size*<br>inch    |
|---------|--------------|------------|-----|------------------|-----|-----------|------|-----------|------|----------|------|------------|------|------------|------|--|
|         |              | kgs        | lbs | kgs              | lbs | mm        | inch | mm        | inch | mm       | inch | mm         | inch | mm         | inch |  |
| S-005   | 0.5          | 0.2        | 0.5 | 0.3              | 0.7 | 125       | 4.9  | 92        | 3.7  | 16       | 0.7  | 31         | 1.3  | 17         | 0.66 | ½ 7/16 ¾                                 |
| S-01    | 1            | 0.5        | 1   | 0.3              | 0.7 | 125       | 4.9  | 92        | 3.7  | 16       | 0.7  | 31         | 1.3  | 17         | 0.66 | ½ 7/16 ¾                                 |
| S-02    | 2            | 1          | 2   | 0.3              | 0.7 | 125       | 4.9  | 92        | 3.7  | 16       | 0.7  | 31         | 1.3  | 17         | 0.66 | ½ 7/16 ¾                                 |
| S-03    | 3            | 1          | 2   | 0.3              | 0.7 | 137       | 5.4  | 100       | 4    | 19       | 0.75 | 38         | 1.5  | 21         | 0.82 | 5/8 ½                                    |
| S-05    | 5            | 2          | 5   | 0.5              | 1   | 147       | 5.8  | 105       | 4.2  | 26       | 1    | 43         | 1.7  | 23         | 0.9  | ¾ 5/8                                    |
| S-10    | 10           | 5          | 10  | 1.4              | 3.1 | 195       | 7.7  | 131       | 5.2  | 41       | 1.6  | 61         | 2.4  | 36         | 1.4  | 1¼, 1½, 1                                |
| S-12    | 12.5         | 5          | 10  | 1.4              | 3.1 | 195       | 7.7  | 131       | 5.2  | 41       | 1.6  | 61         | 2.4  | 36         | 1.4  | 1¼, 1½, 1                                |
| S-15    | 15           | 5          | 10  | 2.5              | 5.5 | 220       | 8.7  | 141       | 5.6  | 43       | 1.7  | 74         | 3    | 43         | 1.7  | 1¾                                       |
| S-20    | 20           | 10         | 20  | 2.5              | 5.5 | 220       | 8.7  | 141       | 5.6  | 43       | 1.7  | 74         | 3    | 43         | 1.7  | 1¾                                       |
| S-25    | 25           | 10         | 20  | 3.7              | 8   | 240       | 9.4  | 150       | 5.9  | 58       | 2.3  | 87         | 3.4  | 44         | 1.7  | 1½                                       |
| S-30    | 30           | 10         | 20  | 3.7              | 8   | 240       | 9.4  | 150       | 5.9  | 58       | 2.3  | 87         | 3.4  | 44         | 1.7  | 1½                                       |
| S-40    | 40           | 20         | 50  | 8                | 17  | 320       | 12.6 | 195       | 7.7  | 71       | 2.8  | 115        | 4.5  | 60         | 2.3  | 2, 1¾                                    |
| S-50    | 50           | 20         | 50  | 8                | 17  | 320       | 12.6 | 195       | 7.7  | 71       | 2.8  | 115        | 4.5  | 60         | 2.3  | 2, 1¾                                    |
| S-80    | 80           | 50         | 100 | 18               | 40  | 405       | 16.9 | 255       | 10   | 97       | 3.8  | 145        | 5.7  | 76         | 3    | 2½                                       |
| S-100   | 100          | 50         | 100 | 28               | 60  | 450       | 17.7 | 275       | 10.8 | 121      | 4.8  | 165        | 6.5  | 81         | 3.18 | CROSBY No. 2160 125t                     |
| S-125   | 125          | 50         | 100 | 28               | 60  | 450       | 17.7 | 275       | 10.8 | 121      | 4.8  | 165        | 6.5  | 81         | 3.18 | CROSBY No. 2160 125t                     |
| S-200   | 200          | 100        | 200 | 57               | 121 | 575       | 22.6 | 350       | 13.8 | 145      | 5.7  | 210        | 8.3  | 106        | 4.2  | CROSBY No. 2160 200t                     |
| S-250   | 250          | 100        | 200 | 106              | 225 | 800       | 31.5 | 490       | 19.3 | 178      | 7.0  | 260        | 10.2 | 138        | 5.4  | CROSBY No. 2140 250t<br>or No. 2160 300t |
| S-300   | 300          | 100        | 200 | 106              | 225 | 800       | 31.5 | 490       | 19.3 | 178      | 7.0  | 260        | 10.2 | 138        | 5.4  | CROSBY No. 2160 300t                     |

\* USE SHACKLES WITH S.W.L. (SAFE WORKING LOAD) EQUAL TO, OR GREATER THAN THE SYSTEM'S FULL RANGE.

\* The company reserves the right to make changes without notice.