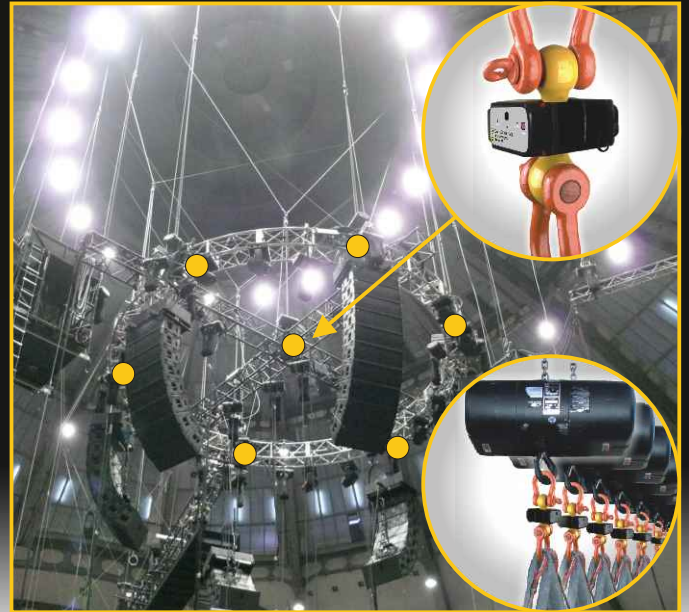


No More Overloads On Stage!

Ron StageMaster 7000 - Wireless Premium

Completely wireless multi load cell system with up to 96 wireless load cells, for load monitoring and overload prevention

- Exceptionally low headroom loss:
Examples: 2t (5:1) load cell: 4"/100mm
2t (10:1) load cell: 4.2"/105mm
- Up to 1500 hours battery life
- R.F transmission range: Up to 450' / 150 meters
- Easy installation: No messy cables
- May be integrated with the Ron StageMaster 5000 Single Wire and together monitor on one screen a total of 328 load cells: 72 wireless load cells and 256 load cells on single wire.
- Logical Zoom In and Zoom Out feature
- Can be added to any existing hoist and hoist control system
- Real time monitoring of load-map that can be overlaid on stage-plan layout (AutoCad etc.)
- Reports: Downloadable data log of months of continuous measurements
- Optional real time cellular SMS alert on overload occurrence
- Optional customized PDA for on-the-go load monitoring



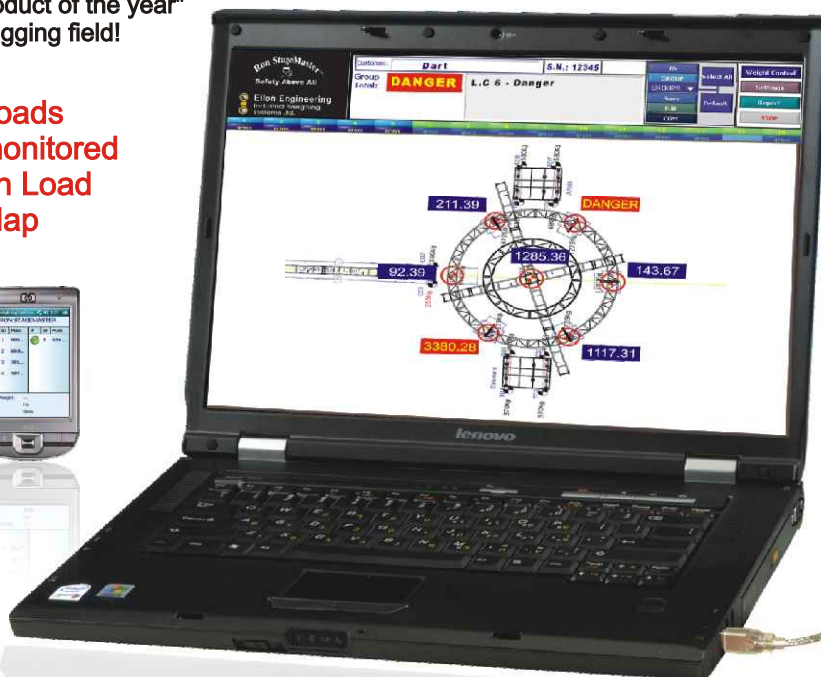
Our customers include:

Universal Studios, Hilton, PRG, Cirque Du Soleil, Orange County Convention Center (Orlando), Kish Rigging, Louis Reyners, Dart, The Creative Reality Group, Outback Rigging, Summit Steel, Gmep-Molpass, Shimizu Octo, Seattle Opera, Esplanada Opera Singapore, Walt Disney, and more

The Ron StageMaster technology was recently deployed at the Grammy Award (Hollywood), McDonald's Global 2008, Celine Dion, Kylie Minogue, Take That, Cirque du Soleil, Holiday on Ice, Mamma Mia and other shows.

Winner of LDI 2007 exhibition's award for "best debuting product of the year" in the stage and rigging field!

Loads
monitored
on Load
Map



Wireless



Ron StageMaster 7000 - Wireless Premium

Completely wireless multi load cell system with up to 96 wireless load cells, for load monitoring and overload prevention

Hanging tons of sound and lighting equipment above spectators and performers is a serious matter, especially in light of the trend of increasing load weight and movement.

Scientifically, each time there are more than two hoists on a truss, or more than three hoists in a structure, there will occur the state of a "Statically Indeterminate Structure", which results in unpredictable load distribution. In most cases this will cause load imbalance, where some of the hoists may reach overload while others carry only a small part of the load.

Furthermore, it has been shown experimentally, that a visually balanced structure is prone to have imbalanced load distribution, and some of the hoists might end up overloaded - in extreme cases even severely so.

This may be exacerbated by weather effects such as winds or snow build-up on a roof. These conditions might reduce the overload tolerance of the structure which carries the rigging.

Thus, overload situations might happen to the most experienced riggers, even if each hanging point's load is calculated and the calculation falls within the limitations of the nominal hoist and truss capacity. The actual load distribution on the truss is still unpredictable and cannot be calculated, or even estimated.

The solution to the need of ensuring safe installations and shows is real-time load monitoring and overload detection.

Ron StageMaster 7000 Wireless Premium is a wireless, multi-frequency, multi load-cell, stage safety device for load control and overload prevention. This top-of-the-line development is based on our 30 years experience in load monitoring and crane scale design and manufacturing.

This laptop based system is a real-time monitor of load-map that can be overlaid on stage-plan layout (e.g AutoCad). The user can assign a name to each predetermined group and easily redefine the group members as required. Using the logical Zoom In and Zoom Out enables the user to simultaneously monitor on one screen 96 individual hanging points, summary of several points (groups) and of the entire structure. The system is configurable with up to 96 load cells per system. It may be integrated with the Ron StageMaster 5000 Single Wire and together monitor on one screen a total of up to 328 load cells: 72 wireless load cells and 256 load cells on single wire.

Ron StageMaster enables monitoring all the loads during installation and throughout the entire show, detecting Overload, Zero, Tare, Sum, Max and readout resolution for each load cell or any of the predetermined groups. The downloadable Data Log of weeks of continuous measurements is comprised of Operator Name, Time, Weight, Overload situations and the Total Cumulative Weight for each group. It enables documentation of each show with detailed report and statistical analysis. The Set Points may be used for alarming and/or stopping the hoists in overload and underload situations.

New: Optional real time cellular SMS alert on overload occurrence, and optional customized PDA for on-the-go load monitoring.

Ron StageMaster is user-friendly and easy to operate and configure for each project. The wireless communication between load cells and receiver enables fast, easy and neat installation. The load cells' small dimensions provide outstandingly low headroom loss as well as portability. The battery life of up to 1500 hours on common disposable batteries provides plug-and-forget advantage.

Specifications:

R.F.: Multi-frequency.

R.F. transmission Range: Up to 450' /150m in normal operation conditions.

Safety Factor: 5:1 Standard. 10:1 and other safety factors are available.

Proof load: 200%.

Accuracy: ± 0.1% of full range.

Capacities: 2t standard capacity with range of capacities from 1t to 5t and higher.

Display: The system allows up to 4 single R.F. channels, each of 24 wireless load cells, for a total system maximum of 96 wireless load cells. Alternatively, it allows up to 3 single R.F. channels, each of 24 wireless load cells, for a maximum of 72 completely wireless load cells, to which can be added a single wire RS-485 channel of up to 256 load cells, for a total system maximum of up to 328 load cells.

The following relevant information derived from the load cells is displayed on the screen: Sum, Max, Tare, Zero, Group (LC), Overload detection, Stage-plan layout, Low battery indication etc.

Monitoring all groups and sub-groups is done by Zoom In and Zoom Out from groups to any load point on the structure plan.

Functions: Logical Zoom In and Zoom Out, Sum, Max, Tare, Zero, Group (LC), Overload detection and alert (visual and audible), Low battery indication, Reports Data Base, User Calibration, Selectable Units, Group functions (Sum, Max, Zero, Tare, Overload and customized overload detection), Plan/layout archiving.

Units: Selectable units feature with the following measurement readings: Metric Tons, Short Tons (2000 Lbs), Kgs, Lbs, Newtons, Deca Newtons, K. Newtons.

Load Cell Material: Made of high-strength, aerospace quality low alloy steel, polyurethane coated.

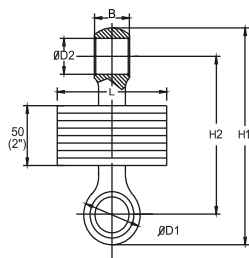
Power: 4 x AA ("finger") 1.5 Volt Alkaline disposable batteries rated 3AH for each load cell. Batteries will function up to 1500 hours. Optional 110/220 VAC operation

Calibration: User calibration. Initial factory calibration is fully traceable to NIST

Temperature Range: Load cell: -15°F to +175°F / -25°C to+80°C

Environmental: Weatherproof, Nema 4, IP 65. Carrying cases included.

Options: Fatigue rated load cells



ISO 9001:2000

Cat no.	Full range	Safety factor	Resolution		Load cell weight		H1(max.)		H2(max.)		B(max.)		L(max.)		Ø D1 (max.)		Ø D2 (min.)		Matching anchor shackle size*
			tons	kgs	lbs	kgs	lbs	mm	inch	mm	inch	mm	inch	mm	inch	mm	inch	mm	
S-01-5	1	5	2	5	1.1	2.5	140	5.5	100	4	19	0.75	110	4.4	38	1.5	21	0.82	5/8, 1/2
S-01-10	1	10	2	5	1.1	2.5	140	5.5	100	4	19	0.75	110	4.4	38	1.5	21	0.82	5/8, 1/2
S-015-5	1.5	5	5	10	1.1	2.5	140	5.5	100	4	19	0.75	110	4.4	38	1.5	21	0.82	5/8, 1/2
S-015-10	1.5	10	5	10	1.1	2.5	140	5.5	100	4	19	0.75	110	4.4	38	1.5	21	0.82	5/8, 1/2
S-02-5	2	5	5	10	1.1	2.5	140	5.5	100	4	19	0.75	110	4.4	38	1.5	21	0.82	5/8, 1/2
S-02-10	2	10	5	10	1.2	2.7	150	5.9	105	4.2	26	1	115	4.7	45	1.75	23	0.9	3/4, 5/8
S-025-5	2.5	5	5	10	1.1	2.5	140	5.5	100	4	19	0.75	110	4.4	38	1.5	21	0.82	5/8, 1/2
S-025-10	2.5	10	5	10	1.2	2.7	150	5.9	105	4.2	26	1	115	4.7	45	1.75	23	0.9	3/4, 5/8
S-03-5	3	5	5	10	1.1	2.5	140	5.5	100	4	19	0.75	110	4.4	38	1.5	21	0.82	5/8, 1/2
S-03-10	3	10	10	20	2	4.5	200	7.9	135	5.3	41	1.6	120	4.8	63	2.5	36	1.4	1 1/4, 1 1/8, 1
S-04-5	4	5	5	10	1.2	2.7	150	5.9	105	4.2	26	1	115	4.7	45	1.75	23	0.9	3/4, 5/8
S-04-10	4	10	10	20	2	4.5	200	7.9	135	5.3	41	1.6	120	4.8	63	2.5	36	1.4	1 1/4, 1 1/8, 1
S-05-5	5	5	10	20	1.2	2.7	150	5.9	105	4.2	26	1	115	4.7	45	1.75	23	0.9	3/4, 5/8
S-05-10	5	10	10	20	2	4.5	200	7.9	135	5.3	41	1.6	120	4.8	63	2.5	36	1.4	1 1/4, 1 1/8, 1