



Ron 2000 Hook Type Crane Scale with Remote Indicator

Exceptionally small dimensions

enable minimum headroom loss. For example: Height of the 5t load cell is 13.2 inch / 334 mm



Optional wireless communication

to additional display or PC that allows for multiple Ron crane scales / dynamometers in one area to send measurements to a centralized location.

Short delivery time:

Usually 2-4 business days

High quality Aerospace Steel for increased strength and safety.



Internal shock protection design: The electronic board is secured on dampening mounts providing protection from external shock.

New: Fatigue rated load cells - an important and unique safety feature: All Ron crane scales and dynamometers are now Fatigue Rated. They have an improved fatigue resistance level.

More than three decades in the market:

Eilon Engineering Ltd. has specialized in the development and manufacturing of Ron crane scales and dynamometers since 1976. We have thousands of repeat customers such as NASA, Boeing, US Air Force and many more.

Standard remote display enables the user to conveniently read the measured values from a safe distance

Exceptionally long battery life Up to 2000 hours on AA disposable batteries with battery life indication

Wide temperature range:

Load cell: -15°F to +175°F (-25°C to +80°C)
Indicator: -4°F to +158°F (-20°C to +70°C).

Double overload warning is displayed on the screen at 100% of full scale and at 130%.

Optional offshore and underwater load cell sealing levels: High sealing level IP 67 and IP 68 for offshore and underwater applications.



Ron 2000 Hook Type Crane Scale with Remote Indicator

Description

Ron 2000 Hook Type is a basic, reliable and easy-to-operate crane scale with remote display. The small Crane scale ensures minimum headroom loss for any application.

Ron 2000 enables up to 2000 hours of battery life on disposable batteries, which makes it ideal for working on site.

Ron 2000 offers an optional transmission of the measured values to a remote destination.

Crane Scales with remote indicators increase the user's safety: Ron 2000's indicator is separated from the load cell and held by the user. This separation ensures the user's safety since under no circumstances will they have to approach the load in order to read the result. This separation also increases the crane scale's durability.

This system's durability is also increased thanks to the fact that its electronic board is mounted on dampening mounts so it can effectively absorb impacts and keep the electronics unharmed in the case of mechanical shock.

Crane Scales and Dynamometers with remote indicators are used for weighing during lifting, as well as force, load and tension measurement.

Crane Scales and Dynamometers improve safety as they help to prevent overload, as well as improving efficiency, for example when weighing incoming raw materials, in advanced stock management, controlled cable tensioning using a tension meter, etc.

All Ron Crane scales and Dynamometers are factory-tested and supplied with a test certificate, including a fully traceable calibration chart.

Ron Crane Scales and Dynamometers are one of the leading brands, worldwide, for more than 30 years.



Ron 2000 Hook Type Crane Scale with Remote Indicator

Specifications

Safety Factor: Designed to 5:1, for the load cell and the shackle. Average straightening load of the hook is at least 4 times the capacity.

Proof Load: Each system proof-loaded to 200% of capacity (certified).

Accuracy: $\pm 0.1\%$ of full range.

Display: 5 digit, 1/2" (12mm) liquid crystal display with two overload warning levels, max. value (peak hold), low battery, tare state (gross or net), measuring unit, sleep state, charge and programming instructions. Standard number of measurements per second: 1. Standard display update rate per second: 1.

Functions: Zero. Tare. Battery charge level. Low battery warning. Max. (peak hold). Two-level overload visual alarms. User calibration. Sleep mode after 60 sec. in zero value, awakes automatically when loaded.

Sampling Rate: 200 per second.

Units: Available in the following measurement readings: metric tons, short tons (2000 lbs), kgs, lbs, newtons, deca newtons, k. newtons.

Load Cell Material: Made of high-strength, aerospace quality, alloy steel.

Indicator Material: ABS

Power: 3 x AA 1.5 Volt Alkaline disposable batteries, with battery life indication. Batteries rated 3AH will function up to 2000 hours (three months of continuous working). Occasional use will extend the life of the batteries up to several years. Adding certain options will shorten the life of the batteries. All settings retained at power off.

Cable: Supplied with 15" / 5m cable.

Calibration: User calibration. Initial factory calibration, fully traceable (certified).

Temperature Range:

Load cell: -15°F to $+175^{\circ}\text{F}$ (-25°C to $+80^{\circ}\text{C}$)

Indicator: -4°F to $+158^{\circ}\text{F}$ (-20°C to $+70^{\circ}\text{C}$).

Environmental: Weather proof NEMA4, IP65



Ron 2000 Hook Type Crane Scale with Remote Indicator

Options

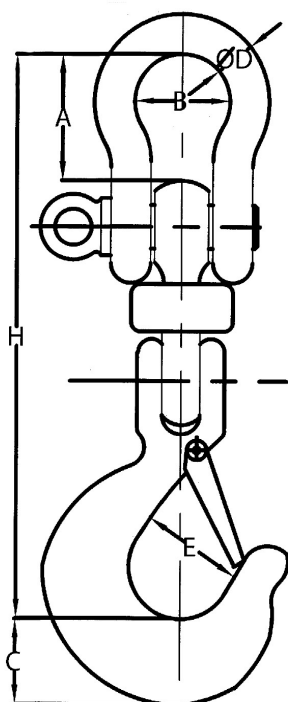
- 1 or 2 user-adjustable set points
- Additional 0.5"/12mm LCD display with cable connection to indicator or wireless
- Additional 1"/25mm LCD display with cable connection to indicator or wireless
- Additional 2"/50mm LCD display with cable connection to indicator or wireless
- Additional 4"/100mm LED display with cable connection to indicator or wireless
- Additional extension cable in 15ft/5m increments
- Analog output: 0 to 1V / 0 to 2V / 0 to 3V
- Analog output: 4 to 20 mA
- Baud rate, user-selectable
- Dampened (average) display for unstable loads
- Data logger – manual or automatic - up to 600 measurements
- Data logger – manual or automatic - up to 3,000 measurements
- Data logger – manual or automatic - up to 6,000 measurements
- Data logger – manual or automatic - up to 10,000 measurements
- Indicator belt clip
- IP 67 load cell with special offshore connectors
- IP 68 load cell with underwater capability
- Longer extension cable in 15ft/5m increments
- Number of measurements per second: Up to 200, factory set
- Real-time clock
- Rechargeable batteries with an external charger
- RS-232 - continuous or on demand data output, user-selectable
- RS-485 - continuous or on demand data output, user-selectable
- Totalizer
- Units, user-selectable
- USB



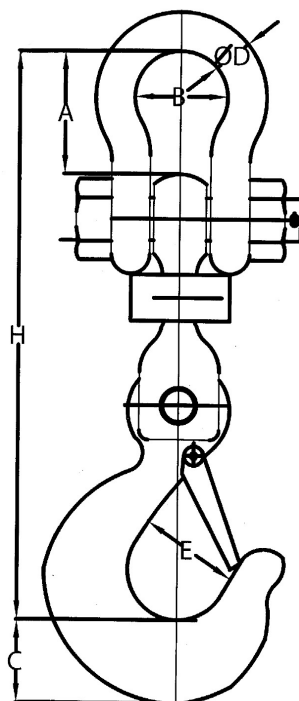
Ron 2000 Hook Type Crane Scale with Remote Indicator

Dimensions Table and Drawing

Capacities 0.5t - 15t



Capacities 20t - 32t



Cat no.	Cap.	Resolution		A		B		C		ϕ D		E		H	
	tons	kgs	lbs	mm	inch	mm	inch	mm	inch	mm	inch	mm	inch	mm	inch
H-005	0.5	0.2	0.5	30	1.2	26	1	31	1.2	10	0.4	25	1	235	9.3
H-01	1	0.5	1	30	1.2	26	1	31	1.2	10	0.4	25	1	235	9.3
H-0125	1.25	0.5	1	30	1.2	26	1	31	1.2	10	0.4	25	1	235	9.3
H-016	1.6	1	2	30	1.2	26	1	31	1.2	10	0.4	25	1	235	9.3
H-025	2.5	1	2	40	1.6	33	1.3	36	1.4	13	0.5	34	1.3	279	11
H-03	3	1	2	40	1.6	33	1.3	36	1.4	13	0.5	34	1.3	279	11
H-032	3.2	2	5	40	1.6	33	1.3	36	1.4	13	0.5	34	1.3	279	11
H-05	5	2	5	50	2	43	1.7	44	1.7	16	0.6	41	1.6	334	13.2
H-10	10	5	10	82	3.2	68	2.7	50	2	25	1	56	2.2	440	17.3
H-12	12.5	5	10	82	3.2	68	2.7	50	2	25	1	56	2.2	440	17.3
H-15	15	5	10	104	4.1	82	3.2	64	2.5	33	1.3	57	2.2	508	20
H-20	20	10	20	137	5.3	111	4.3	79	3.1	41	1.6	71	2.8	621	24.5
H-25	25	10	20	169	6.6	146	5.7	99	3.9	51	2	86	3.4	744	29.3
H-30	30	10	20	169	6.6	146	5.7	99	3.9	51	2	86	3.4	744	29.3
H-32	32	10	20	169	6.6	146	5.7	99	3.9	51	2	86	3.4	744	29.3