



Ron 2501 Hook Type Wireless Crane Scale

Exceptionally small dimensions enable minimum headroom loss and portability. For example: Height of the 3t load cell is 11 inch / 279 mm



More than three decades in the market: Eilon Engineering Ltd. has specialized in the development and manufacturing of Ron crane scales and dynamometers since 1976. We have thousands of repeat customers such as NASA, Boeing, US Air Force and many more.



Short delivery time:
 Usually 2 - 4 business days.

High quality Aerospace Steel
 for increased strength and safety.

Long transmission range: Up to 450' / 150m.

Exceptionally long battery life: Up to 4000 hour on AA disposable batteries (optional).

New: Fatigue rated load cells - an important and unique safety feature: All Ron crane scales and dynamometers are now Fatigue Rated. They have an improved fatigue resistance level.

Optional thermometer: The load cell temperature is displayed in real time on the indicator (in Celsius or Fahrenheit degrees), enabling the user to avoid overheating of the load cell.



Wide temperature range:
 Load cell: -15°F to +175°F (-25°C to + 80°C)
 Indicator: -4°F to +158°F (-20°C to +70°C).

Multi-cell option: Measurements of several load cells (up to 16) can be displayed simultaneously on one indicator, as well as their sum.



Internal shock protection design: The electronic board is secured on dampening mounts providing protection from external shock.

Safety feature: The Ron 2501 is programmed to insure that the indicated value is identical to the transmitted one.

Double overload warning is displayed on the screen at 100% of full scale and at 130%.

Advanced options such as: Integrated data logger, additional wireless indicator and more.

Heat Shield for foundries: Composed of special heat resistant material to slow the internal heating process, as well as a metal plate for protection against heat radiation.





Ron 2501 Hook Type Wireless Crane Scale

Description

The Ron 2501 hook type is a unique wireless crane scale which offers value added features for the users.

This wireless crane scale combines the ease of use that a hook allows, and the safety and comfort of using a remote, wireless display. In addition, its small size enables low headroom loss.

Ron 2501 radio crane scale enables up to 2000 hours battery life as standard, and an optional feature of up to 4000 hours (both on disposable AA batteries).

The load cell of this wireless crane scale is made of high quality aerospace steel.

This system's durability is also increased thanks to the fact that its electronic board is mounted on dampening mounts so it can effectively absorb shocks and keep the electronics unharmed in case of external mechanical shocks.

Ron 2501 telemetry crane scale is also available as multi-cell system, where several wireless load cells' measurements are summed up and shown on one indicator. The same is available with our Ron StageMaster system where up to 100 wireless load cells transmit to one or more receivers and create a real time load map, presented on one or more laptop screen as well as on smartphones and tablets.

Ron 2501 wireless crane scales are especially suitable for foundries and other hot temperature industries. In addition, the Ron 2501 telemetry crane scale enables quick and easy installation and is an ideal solution for all those applications where using a cable is not possible or not convenient.

Another unique feature of these wireless crane scales is protection against external shocks as well as double overload warning.

Ron 2501 wireless crane scales offer an internal mechanism which ensures that the received and indicated value is identical to the transmitted value. It will not indicate a value different from the transmitted one. This mechanism of the Ron 2501 radio crane scales increases the system's safety and utility.

These wireless crane scales, dynamometers and load cells have been sold worldwide for the last three decades.

Ron 2501 telemetry crane scales and dynamometers are supplied with a test certificate, which includes a fully traceable calibration chart



Ron 2501 Hook Type Wireless Crane Scale

Specifications

Transmission range: Up to 150 yards / meters (outdoor, line of sight).

Safety factor: Designed to 5:1.

Proof Load: Each system proof-loaded to 200% of capacity (certified).

Accuracy: $\pm 0.1\%$ of full range.

Display: 5 digit, $\frac{1}{2}$ " (12mm) liquid crystal display with two overload warning levels, max. value (peak hold), low battery (load cell and indicator), tare state (gross or net), measuring unit, charge and programming instructions. Standard display update rate per second: 1 (optional 2/3).

Sampling Rate: 200 per second.

Functions: Zero. Tare. Battery charge level. Low battery warning one for the load cell and the other for the hand held indicator, displayed on the latter. Max. (peak hold). Two-level overload visual alarms. User calibration.

Units: Available in the following measurement readings: metric tons, short tons (2000 lbs), kgs, lbs, newtons, deca newtons, k. newtons.

Load Cell Material: Made of high-strength, aerospace quality, alloy steel, polyurethane coated.

Indicator Material: High quality ABS.

Power: 3 x AA 1.5 Volt Alkaline disposable batteries in the indicator and 2 x AA batteries in the load cell (optional 4 x AA batteries) for extended battery life, with battery life indication. Batteries rated 3AH will function up to 2000 hours (three months of continuous working). Optional extended battery life of up to 4000 hours is available. Occasional use will extend the life of the batteries up to several years. Adding certain options will shorten the life of the batteries. All settings retained at power off.

Calibration: User calibration. Initial factory calibration, fully traceable (certified).

Temperature Range:

Load cell: -15°F to $+175^{\circ}\text{F}$ (-25°C to $+80^{\circ}\text{C}$)

Indicator: -4°F to $+158^{\circ}\text{F}$ (-20°C to $+70^{\circ}\text{C}$).

Environmental: Weather proof NEMA4, IP65



Ron 2501 Hook Type Wireless Crane Scale

Options

- 1 or 2 user-adjustable set points
- Additional 0.5"/12mm LCD display with cable connection to indicator or wireless
- Additional 1"/25mm LCD display with cable connection to indicator or wireless
- Additional 2"/50mm LCD display with cable connection to indicator or wireless
- Additional 4"/100mm LED display with cable connection to indicator or wireless
- Additional wireless ABS indicator 0.5"/12mm digits
- Additional wireless aluminum indicator 1"/25mm digits
- Additional wireless aluminum indicator 2"/50mm digits
- Battery life: Extended battery life of up to 4000 hours
- Baud rate, user-selectable
- Dampened (average) display for unstable loads
- Data logger – manual or automatic - up to 600 measurements
- Data logger – manual or automatic - up to 3,000 measurements
- Data logger – manual or automatic - up to 6,000 measurements
- Data logger – manual or automatic - up to 10,000 measurements
- Indicator belt clip
- IP 67 load cell with special off-shore connectors
- IP 68 load cell with underwater capability
- Multi-cell: Up to 8 different load cells controlled by a single indicator
- Number of measurements per second: 2,3, factory set
- Real-time clock
- Robust, extruded aluminum, hand-held indicator (1"/25mm or 2"/50mm digits)
- Rechargeable batteries with an external charger.
- RS-232 - continuous or on demand data output, user-selectable
- RS-485 - continuous or on demand data output, user-selectable
- Totalizer
- Units, user-selectable
- USB

Options for hot industries:

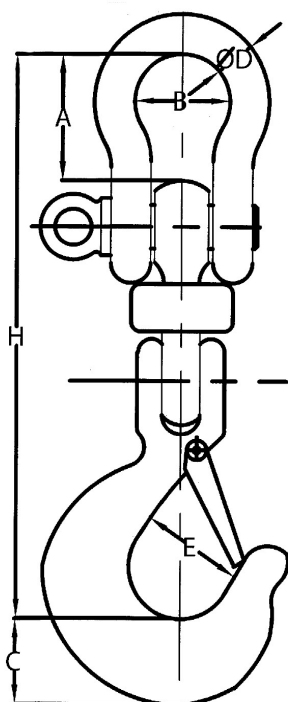
- Heat shield for the load cell
- Internal load cell thermometer for load cell temperature display on the hand-held indicator



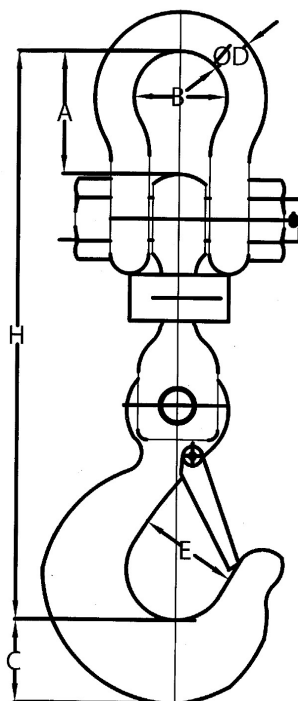
Ron 2501 Hook Type Wireless Crane Scale

Dimensions Table and Drawing

Capacities 0.5t - 15t



Capacities 20t - 32t



Cat no.	Cap.	Resolution		A		B		C		φ D		E		H	
		tons	kgs	lbs	mm	inch	mm	inch	mm	inch	mm	inch	mm	inch	
H-005	0.5	0.2	0.5	30	1.2	26	1	31	1.2	10	0.4	25	1	235	9.3
H-01	1	0.5	1	30	1.2	26	1	31	1.2	10	0.4	25	1	235	9.3
H-0125	1.25	0.5	1	30	1.2	26	1	31	1.2	10	0.4	25	1	235	9.3
H-016	1.6	1	2	30	1.2	26	1	31	1.2	10	0.4	25	1	235	9.3
H-025	2.5	1	2	40	1.6	33	1.3	36	1.4	13	0.5	34	1.3	279	11
H-03	3	1	2	40	1.6	33	1.3	36	1.4	13	0.5	34	1.3	279	11
H-032	3.2	2	5	40	1.6	33	1.3	36	1.4	13	0.5	34	1.3	279	11
H-05	5	2	5	50	2	43	1.7	44	1.7	16	0.6	41	1.6	334	13.2
H-10	10	5	10	82	3.2	68	2.7	50	2	25	1	56	2.2	440	17.3
H-12	12.5	5	10	82	3.2	68	2.7	50	2	25	1	56	2.2	440	17.3
H-15	15	5	10	104	4.1	82	3.2	64	2.5	33	1.3	57	2.2	508	20
H-20	20	10	20	137	5.3	111	4.3	79	3.1	41	1.6	71	2.8	621	24.5
H-25	25	10	20	169	6.6	146	5.7	99	3.9	51	2	86	3.4	744	29.3
H-30	30	10	20	169	6.6	146	5.7	99	3.9	51	2	86	3.4	744	29.3
H-32	32	10	20	169	6.6	146	5.7	99	3.9	51	2	86	3.4	744	29.3