



## Ron 2125 Hook Type Crane Scale with 1"/25mm Attachable Display

### Exceptionally small dimensions

enables minimum headroom loss.

For example:

Height of the 5t load cell is 13.2 inch / 334 mm



**Short delivery time:** Usually 2 - 4 business days.

**High quality Aerospace Steel** for increased strength and safety.

**New: Fatigue rated load cells - an important and unique safety feature:** All Ron crane scales and dynamometers are now Fatigue Rated. They have an improved fatigue resistance level.

**Advanced options such as:** Integrated data logger, analog output, averaging / dampening and more.

### Wide temperature range:

Load cell: -15°F to +175°F (-25°C to + 80°C)  
Indicator: -4°F to +158°F (-20°C to +70°C).

### More than three decades in the market:

Eilon Engineering Ltd. has specialized in the development and manufacturing of Ron crane scales and dynamometers since 1976. We have thousands of Boeing, US Air Force and many more.

**Optional wireless communication** to additional display or PC that allows for multiple Ron crane scales/dynamometers in one area to send measurements to a centralized location.

**Exceptionally long battery life** Up to 2000 hours on AA disposable batteries with battery life indication.

**Double overload warning** is displayed on the screen at 100% of full scale and at 130%.

**Attachable display** enables the user to either hold the display or to easily attach it to the load cell. the remote display enables The user to conveniently read the measured values from a safe distance. Remote display (hand-held only) for capacities larger than 12.5t.

**Optional offshore and underwater load cell sealing levels:** High sealing level IP 67 and ip68 for offshore and underwater applications.



## Ron 2125 Hook Type Crane Scale with 1"/25mm Attachable Display

### Description

Ron 2125 Hook Type is a portable digital Crane Scale with hand-held remote display that up to 12.5 tons capacity is attachable and can be attached to the load cell. The attachable display enables the user either to hold the display in his hand or snap it very easily onto the load cell.

By this means, the user's personal safety is ensured as under no circumstances will they have to approach the load in order to read the result: They can either hold the remote indicator in their hand or read the display from a safe distance.

The separation of load cells and displays also increases the crane scale's durability. This system's durability is also increased thanks to the fact that its electronic board is mounted on dampening mounts so it can effectively absorb impacts and keep the electronics unharmed in the case of mechanical shock.

The small load cells of the portable digital crane scales ensure low headroom loss for any application.

Ron 2125's battery life is up to 2000 hours on disposable batteries and thanks to its optional transmission capability it is possible to transmit the measured values to an additional remote display.

Crane Scales, Dynamometers and Load Cells, are used for weighing during lifting, as well as force, load and tension measurement.

Eilon Engineering has been specializing in crane scales and dynamometers for more than 30 year and its Ron Crane Scales and Dynamometers brand is one of the leading brands in the global market, with repeat customers like NASA, Boeing, US Air Force, GE, Siemens and many others

All Ron Crane Scales are factory-tested and supplied with a test certificate, including a fully traceable calibration chart.



## Ron 2125 Hook Type Crane Scale with 1"/25mm Attachable Display

### Specifications

**Safety Factor:** Designed to 5:1, for the load cell and the shackle. Average straightening load of the hook is at least 4 times the capacity.

**Proof Load:** Each system proof-loaded to 200% of capacity (certified).

**Accuracy:**  $\pm 0.1\%$  of full range.

**Durability:** Robust indicator with extruded aluminum housing, polyurethane coated.

**Display:** 5 digit, 1" (25mm) liquid crystal display with two overload warning levels, max. value (peak hold), low battery, tare state (gross or net), measuring unit, sleep state, charge and programming instructions. Standard number of measurements per second: 1. Standard display update rate per second: 1.

**Functions:** Zero. Tare. Battery charge level. Low battery warning. Max. (peak hold). Two-level overload visual alarms. User calibration. Sleep mode after 60 sec. in zero value, awakes automatically when loaded.

**Sampling Rate:** 200 per second.

**Units:** Available in the following measurement readings: metric tons, short tons (2000 lbs), kgs, lbs, newtons, deca newtons, k. newtons.

**Load Cell Material:** Made of high-strength, aerospace quality, alloy steel.

**Indicator Material:** Extruded aluminum.

**Power:** 3 x AA 1.5 Volt Alkaline disposable batteries, with battery life indication. Batteries rated 3AH will function up to 2000 hours (three months of continuous working). Occasional use will extend the life of the batteries up to several years. Adding certain options will shorten the life of the batteries. All settings retained at power off.

**Cable:** Supplied with 15" / 5m cable.

**Calibration:** User calibration. Initial factory calibration, fully traceable (certified).

**Temperature Range:**

Load cell:  $-15^{\circ}\text{F}$  to  $+175^{\circ}\text{F}$  ( $-25^{\circ}\text{C}$  to  $+80^{\circ}\text{C}$ )

Indicator:  $-4^{\circ}\text{F}$  to  $+158^{\circ}\text{F}$  ( $-20^{\circ}\text{C}$  to  $+70^{\circ}\text{C}$ ).

**Environmental:** Weather proof NEMA4, IP65



## Ron 2125 Hook Type Crane Scale with 1"/25mm Attachable Display

### Options

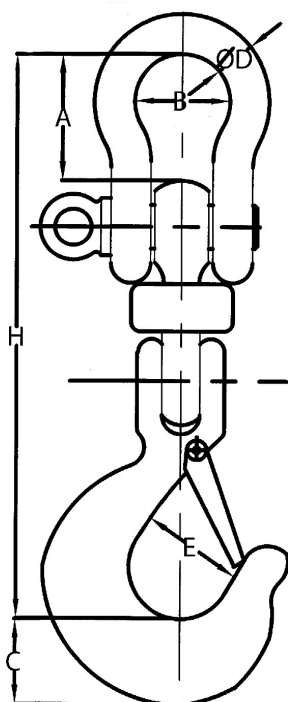
- 1 or 2 user-adjustable set points
- Additional 0.5"/12mm LCD display with cable connection to indicator or wireless
- Additional 1"/25mm LCD display with cable connection to indicator or wireless
- Additional 2"/50mm LCD display with cable connection to indicator or wireless
- Additional 4"/100mm LED display with cable connection to indicator or wireless
- Additional extension cable in 15ft/5m increments
- Analog output: 0 to 1V / 0 to 2V / 0 to 3V
- Analog output: 4 to 20 mA
- Baud rate, user-selectable
- Dampened (average) display for unstable loads
- Data logger – manual or automatic - up to 600 measurements
- Data logger – manual or automatic - up to 3,000 measurements
- Data logger – manual or automatic - up to 6,000 measurements
- Data logger – manual or automatic - up to 10,000 measurements
- IP 67 load cell with special offshore connectors
- IP 68 load cell with underwater capability
- Longer extension cable in 15ft/5m increments
- Number of measurements per second: Up to 200, factory set
- Real-time clock
- Rechargeable batteries with an external charger
- RS-232 - continuous or on demand data output, user-selectable
- RS-485 - continuous or on demand data output, user-selectable
- Totalizer
- Units, user-selectable
- USB



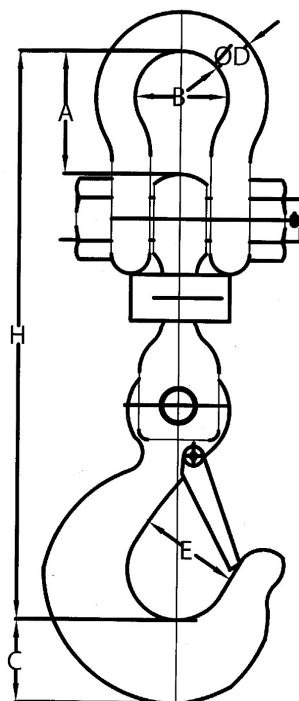
**Ron 2125 Hook Type Crane Scale with 1"/25mm Attachable Display**

**Dimensions Table and Drawing**

**Capacities 0.5t - 15t**



**Capacities 20t - 32t**



Cat no.	Cap.	Resolution		A		B		C		Ø D		E		H	
		tons	kgs	lbs	mm	inch	mm	inch	mm	inch	mm	inch	mm	inch	mm
H-005	0.5	0.2	0.5	30	1.2	26	1	31	1.2	10	0.4	25	1	235	9.3
H-01	1	0.5	1	30	1.2	26	1	31	1.2	10	0.4	25	1	235	9.3
H-0125	1.25	0.5	1	30	1.2	26	1	31	1.2	10	0.4	25	1	235	9.3
H-016	1.6	1	2	30	1.2	26	1	31	1.2	10	0.4	25	1	235	9.3
H-025	2.5	1	2	40	1.6	33	1.3	36	1.4	13	0.5	34	1.3	279	11
H-03	3	1	2	40	1.6	33	1.3	36	1.4	13	0.5	34	1.3	279	11
H-032	3.2	2	5	40	1.6	33	1.3	36	1.4	13	0.5	34	1.3	279	11
H-05	5	2	5	50	2	43	1.7	44	1.7	16	0.6	41	1.6	334	13.2
H-10	10	5	10	82	3.2	68	2.7	50	2	25	1	56	2.2	440	17.3
H-12	12.5	5	10	82	3.2	68	2.7	50	2	25	1	56	2.2	440	17.3
H-15	15	5	10	104	4.1	82	3.2	64	2.5	33	1.3	57	2.2	508	20
H-20	20	10	20	137	5.3	111	4.3	79	3.1	41	1.6	71	2.8	621	24.5
H-25	25	10	20	169	6.6	146	5.7	99	3.9	51	2	86	3.4	744	29.3
H-30	30	10	20	169	6.6	146	5.7	99	3.9	51	2	86	3.4	744	29.3
H-32	32	10	20	169	6.6	146	5.7	99	3.9	51	2	86	3.4	744	29.3